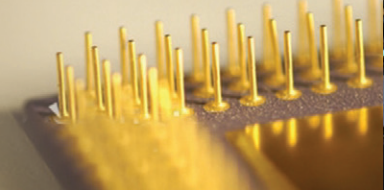




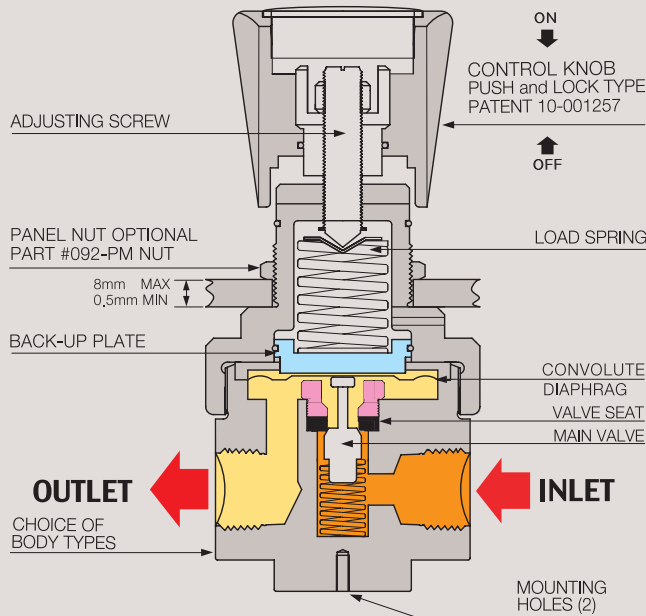
092 S E R I E S

HIGH-FLOW REGULATOR



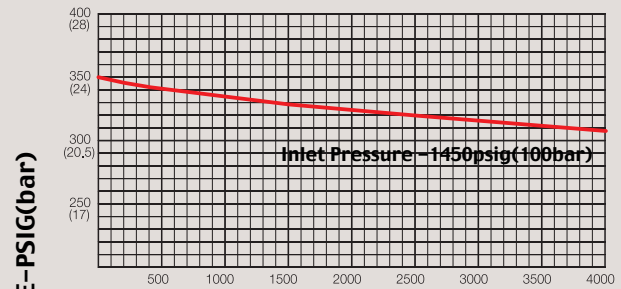


FUNCTIONAL SCHEMATIC



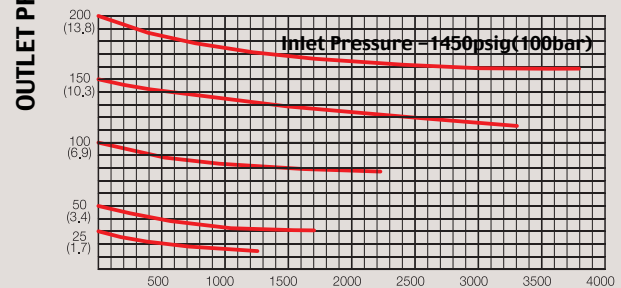
FLOW CHART

REGULATOR DISCHARGE CHARACTERISTICS CURVES



FLOW RATE Nm³/h AIR

REGULATOR DISCHARGE CHARACTERISTICS CURVES



FLOW RATE L/Min AIR

HIGH-FLOW REDUCING REGULATOR

092 SERIES

092시리즈는 정밀 배관 라인에서 고유량의 부식성 기스와 액체 등을 조절할 수 있도록 고안된 1/2" NPT 타입 Regulator입니다. 본체와 내부의 모든 부품은 Stainless steel 316L로서 산업 전반의 부식성 가스, 고순도 기스와 액체 등에 강한 특성을 나타냅니다. 입구 압력은 3500psig(241bar) or 500psi(35bar)이고 출구 압력은 각각의 모델에 따라 최대 350psig(24bar)까지 사용할 수 있도록 제작 설계 되었습니다. 모든 DRASTAR Regulators는 외부적인 진동과 가스배관 라인의 미세 진동 등으로 인하여 초기 셋팅 값이 스스로 변하는 현상을 완전히 해결한 드라스타만의 Push and Lock 타입의 조절 손잡이를 적용하여 사용하기에 더욱 편리합니다. 조절 손잡이를 누르면 셋팅값이 변하는 것을 방지하며, 손잡이를 위로 올려 자유롭게 원하는 압력으로 다시 셋팅 할 수 있는 드라스타만의 특허 10-2009-0012957출원한 Push and Lock 타입의 레귤레이터입니다.

092 Series gas and liquid regulators are specially designed to regulate the mass-flow of gases and liquid such as semiconductor equipment production line and ultra-precision plumbing line with 1/2" FNPT, etc. As the product's body and all internal parts are made of stainless steel 316L that is strong for corrosiveness and liquid, they can be used for ultra-pure six-nine (99.9999) gases, corrosive gases, and liquids. Accordingly, special regard was paid to utmost safety and easy operation of the regulators. DRASTAR regulators are designed and manufactured for easier operation by equipping with the DRASTAR's own developed push and lock type handle which completely prevents the self-change of pre-set value which can be caused by the vibration from outside or minute vibration at the gas pipeline. You can prevent the self-changing of pre-set value just by pushing the handle and reset the value freely by holding upward the handle. DRASTAR has created and applied patent for this push and lock system for DRASTAR regulators (patent number 10-2009-0012957).

SPECIFICATIONS

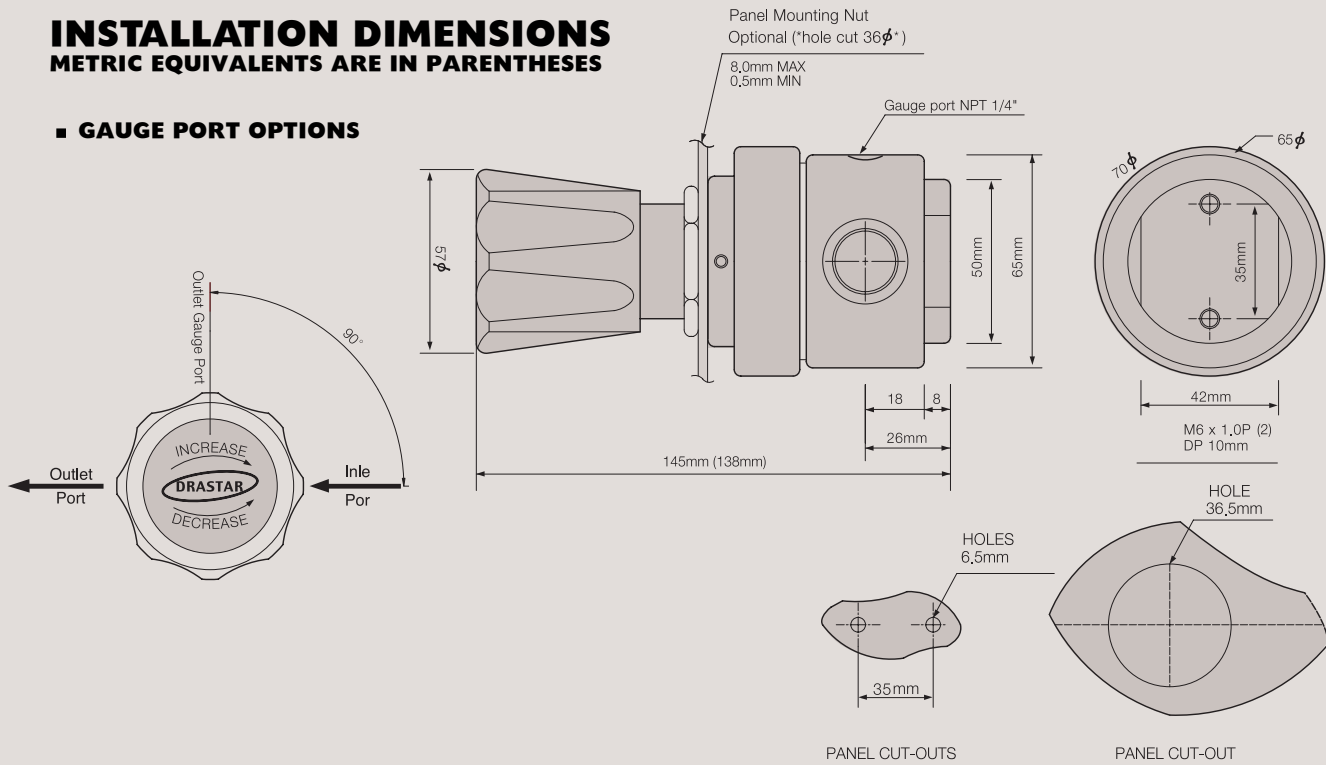
Ports	1/2" 3-ports NPT type
Leak Rate Certification	to 2x10 ⁻⁸ atm cc/sec Helium available.
Body Material	Stainless steel 316L
Bonnet Material	Nickel Plated Forged Brass/stainless steel 316L
Diaphragm	Stainless steel 316L
Main Valve	Stainless steel 316L
Valve Spring	Stainless steel 316L
Valve Seat	Teflon® (Kel-F, Polyimide, etc.. Optional)
Inlet Pressure Ranges	092-0000-1S, 3,500psig (238bar) 092-0000-1S-5, 500psig (35bar)
Outlet Pressure Ranges	25(1.7bar), 50(3.5bar), 100(7bar), 200(14bar), 350psig(24bar)
Self-Venting	092-0000-1S-V Optional
Operating Temperature	-40°C - +70°C (-40°F - +160°F) (standard) 092-0000-1S-H1, +120°C (Optional) 092-0000-1S-H2, +250°C (Optional)
Flow Capacity	Cv=1.0 (Cv=1.2 Optional)

REFERENCE

This catalogue is printed as of January 2010, and the dimensions and/or specifications in this catalogue can be changed without prior notice in the course of constant upgrading and improvement of our products.

INSTALLATION DIMENSIONS
METRIC EQUIVALENTS ARE IN PARENTHESES

■ GAUGE PORT OPTIONS



Features

- Suitable for the High-Flow Regulator of 1/2" NPT Type
- Body and all internal parts are Stainless steel 316L
- Inlet 3500psig(241bar) or 500psig(35bar)
- Outlet 25psig(1,7bar), 50psig(3,5bar), 100psig(7bar), 200psig(14bar), 350psig(24bar)
- Panel mounting nut option
- W092-0000-1S / W MODEL IS ONLY TYPE for LIQUID or WATER

권장 사항

각 제품들은 최고의 안전성과 쉬운 조작성을 고려하여 제작되었습니다. 그러나 가장 안전하고 효율적인 Regulator 사용을 위해서는 실제 사용 압력을 각각 모델의 사용 압력에 25% ~ 75% 이내에서 사용하면 가장 이상적인 압력을 사용할 수 있습니다. 정밀하고 원활한 동작과 제품의 수명 연장을 위해서는 위의 범위 내에서 사용하기를 적극 권장합니다.

Recommendations to Use

Each product is manufactured since being taken into consideration of the best safety and easy manipulation. However in order to use the regulator in most safe and effective way, you are recommended to use the actual pressure within the range of its 25% ~ 75%. For making precise, smooth movement and to prolong product life, strongly recommended to make a use within above mentioned range.

ORDERING INFORMATION

W 092 0025 - 1S - 5 - V - H1

W MODEL IS ONLY TYPE FOR LIQUID or WATER

BASIC SERIES NUMBER

Standard Inlet Pressure
3500PSIG (238 bar)
Standard Material
Stainless Steel 316L
3-Ports NPT

OUTLET PRESSURE RANGES

0025 = 1-25PSIG (.1~1,7 bar)
0050 = 1-50PSIG (.1~3,5 bar)
0100 = 1-100PSIG (.1~ 7 bar)
0200 = 2-200PSIG (.1~14 bar)
0350 = 3-350PSIG (.1~24 bar)
0500 = 4-500PSIG (.1~34bar)
* 500PSIG : W Model Only

HIGH TEMPERATURE OPTION
H1 = 120°C, H2 = 250°C

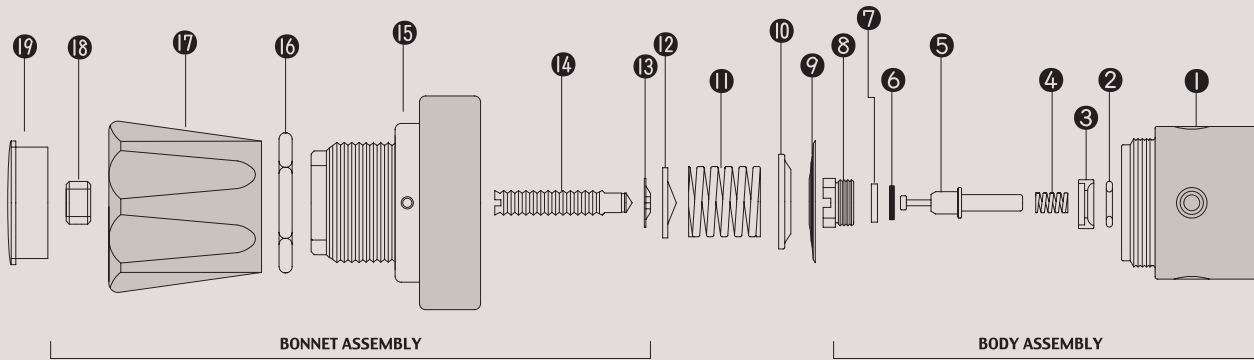
V = Self-Venting (Optional)

INLET PRESSURE OPTION
5 = 500psig (35 bar)

FLOW CAPACITY
S = Cv=1,0 (Standard)
O = Cv=1,2 (Option)

INLET AND OUTLET PORTS
1 = 1/2" NPT

092 SERIES PART LIST



STANDARD MODEL SERIES

Item No.	Description	Part No.	Model Application
01	Body	092-01	All Model Same (Stainless steel 316L)
02	Main Valve guide O-ring	092-02	All Model Same
03	Main Valve O-ring Cartridge	092-03	All Model Same
04	Valve spring	092-04	092-04-1(25psi),092-04-2(50psi),092-04-3(100psi),092-04-4(200psi),092-04-5(350psi)
05	Main Valve	092-05	All Model Same
06	Valve Seat	092-06	092-06-2,092-XXXX-1S-H1(120°C), 092-06-3, 092-XXXX-1S-H2(250°C), Optional
07	Valve Seat Cartridge	092-07	All Model Same
08	Locking Screw	092-08	All Model Same
09	STS 316L Diaphragm	092-09	All Model Same
10	Back-up Plate	092-10	092-12-1(25psi),092-12-2(50psi),072-12-3(100psi),092-12-4(000psi),092-04-5(350psi)
11	Load Spring	092-11	092-12-1(25psi),092-12-2(50psi),072-12-3(100psi),092-12-4(000psi),092-04-5(350psi)
12	Pivot	092-12	092-14-1(25psi),092-14-2(50psi),092-14-3(100psi),092-14-4(200psi),092-04-5(350psi)
13	Locking Ring	092-13	092-13-1(25psi),092-13-2(50psi),092-13-3(100psi),092-13-4(200psi),092-04-5(350psi)
14	Adjusting Screw	092-14	All Model Same
15	Bonnet	092-15	All Model Same (092-17-2, Stainless steel 316L Bonnet Optional)
16	Panel mount Nut	092-16	All Model Same (M35 x P1.5 Optional)
17	Control Knob	092-17	All Model Same, (120°C, 250°C, Aluminum Control knob 092-19-2 Optional)
18	Locking Nut	092-18	All Model Same
19	Name Cap	092-19	25,50,100,200,350